A large, bold, white capital letter 'A' is centered on a solid gray background. The letter is the primary visual element of the image.

Adaptronic, your engine management solution.



A Powerful Engine Management Unit for your MX-5

This engine management unit allows you to completely control your engine, with an intuitive and powerful software.

With this product there is no more modifying stock engine control unit (ECU) signals, or tweaking through a small controller. You interact with your motor just like top engineers at any major auto makers do, and that is through a dedicated software program and a computer.

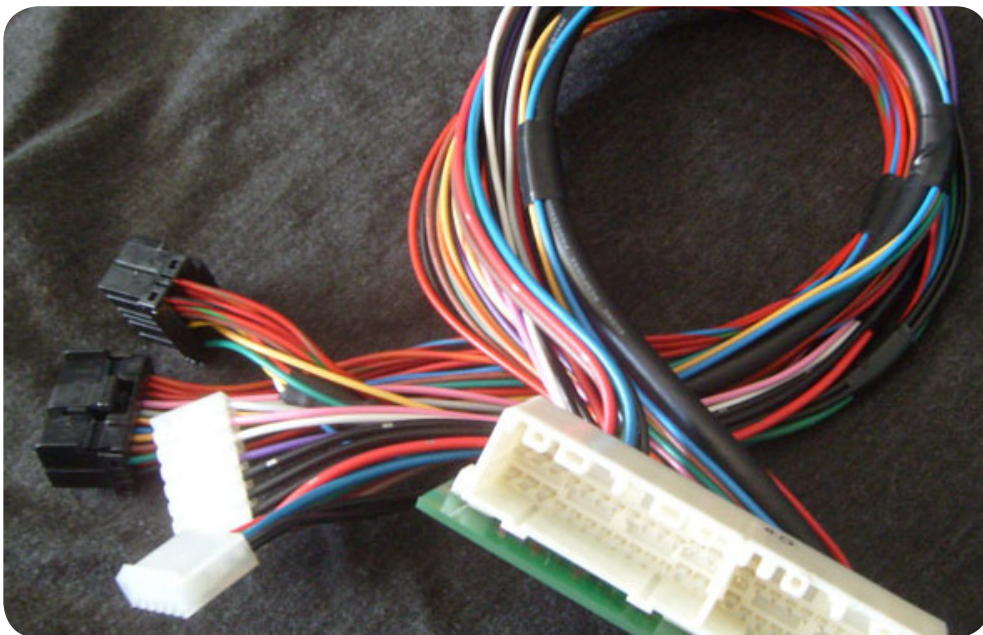
89-95

99-00

01-05

BASE MAPS AVAILABLE

Plug and Play Harnesses Make Installs Easy!



Standard Features



- Full sequential Injection
- Full sequential ignition or wasted spark
- Closed loop idle, fuel, spark, VVT, and waste gate control
- Powerful auto tune that even works without a laptop!

Launch control



- This system is based on the actual wheel speed of the vehicle
- Set desired RPM, and indicated wheel speed.
- Cut fuel, or ignition to limit RPM

Supports



- Nitrous
- Methanol or Water Injection
- VICS
- Turbo Timers
- Switch based map changing for race gas
- Many more!

Auto tune options:



- Select how coarse or fine the adjustments are.
- Select which parts of the map to tune.
- Tune while your not even connected to a laptop!
- Ignition auto tune!

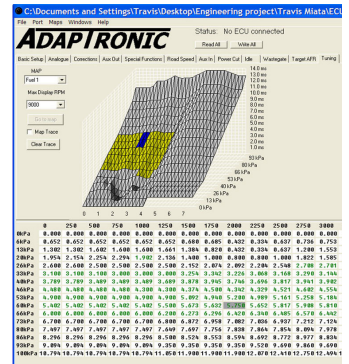
A large, white, stylized letter 'S' is centered on a solid orange background. The letter is thick and has a slight curve, giving it a modern, clean appearance.

The software that drives you.

Powerful Engine Management Software

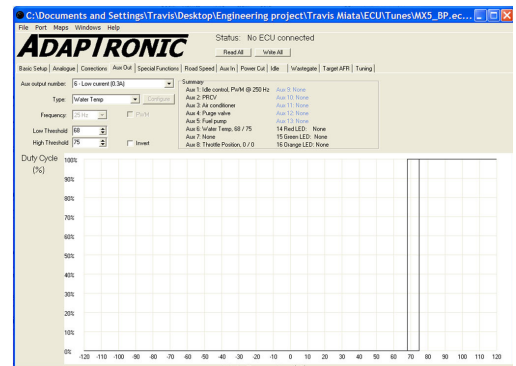
Adjust fuel maps with ease

- RPM increments of 200-250-300-500 RPM in 32 cells
- Load increments in percent throttle position (TPS) or pressure (MAP)
- Load is split into 16 increments
- Total tuning sites 512
- Select TPS*MAP protocol for optimum independent throttle control.
- Interpolate options built right into the program for easy manipulation
- Copy, paste, import and export maps.



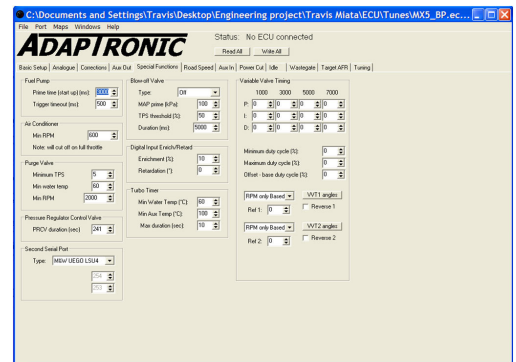
Powerful auxiliary controls:

- Control any 12 volt electronic.
- Can be configured to any device
- 3 high power capable of pulse width modulation
- 1 high power channel
- 4 low power channels



Electronic Wastegate and Variable Valve Timing (VVT) Controllers

- Complete closed loop waste gate control
- Boost by gear to keep rubber to asphalt.
- PID controllers allow you to precisely control boost pressure at the threshold.
- Powerful VVT control based on RPM or RPM and Load



Inputs

- Wide band oxygen sensor (WB0₂) compatibility including M&W UEGO, TechEdge V2, TechEdge 2J1, Innovate LC-1, FJO Gen II, AEM UEGO
- Supports exhaust gas temperature sensors (EGT)
- Supports a switch for on the fly fuel and ignition map changes.
- Data logs up to 26 variables for a powerful tuning tool in even the most demanding race programs.